



Cambridge University Hospitals **NHS**
NHS Foundation Trust

ΙΝΣΤΙΤΟΥΤΟ ΠΡΟΛΗΨΗΣ, ΕΚΠΑΙΔΕΥΣΗΣ & ΕΡΕΥΝΑΣ
ΝΕΥΡΟΛΟΓΙΚΩΝ ΝΟΣΗΜΑΤΩΝ

Εκπαιδευτικά Σεμινάρια στη Νευρολογία 2012

**ΚΛΙΝΙΚΕΣ ΜΕΛΕΤΕΣ
ΣΤΗ ΝΕΥΡΟΛΟΓΙΑ**

**21 - 23 Σεπτεμβρίου
2012**

Ξενοδοχείο **Divani Caravel**
Αίθουσα «Athens View»
Αθήνα

Υπεύθυνοι Προγράμματος:



ΙΝΣΤΙΤΟΥΤΟ ΠΡΟΛΗΨΗΣ, ΕΚΠΑΙΔΕΥΣΗΣ & ΕΡΕΥΝΑΣ
ΝΕΥΡΟΛΟΓΙΚΩΝ ΝΟΣΗΜΑΤΩΝ

**Αλέξανδρος Παπαδημητρίου
Γεώργιος Χατζηγεωργίου**

Cambridge University Hospitals **NHS**
NHS Foundation Trust

**Dr Duncan Forsyth
Prof. Anthony Rudd**

Πρόγραμμα

D. Forsyth

Consultant Geriatrician, Addenbrooke's Hospital, Cambridge

A. Rudd

Professor of Stroke Medicine
Guy's & St Thomas' Foundation Trust



21 - 23 September | Σεπτεμβρίου 2012

ΚΛΙΝΙΚΕΣ ΜΕΛΕΤΕΣ ΣΤΗ ΝΕΥΡΟΛΟΓΙΑ

Friday 21st September 2012

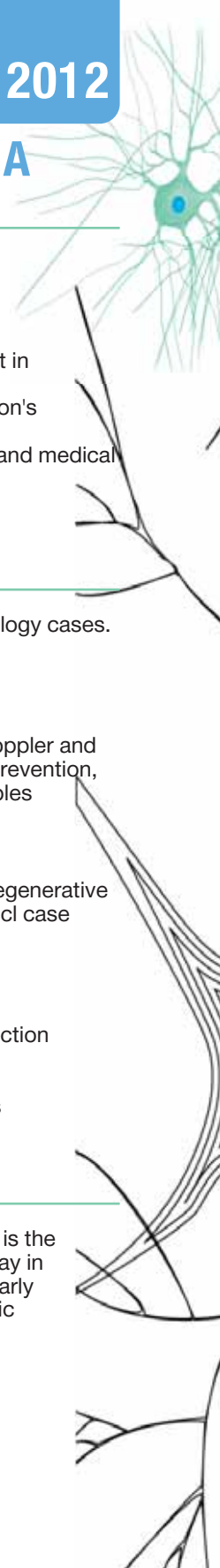
- 17.00 - 18.00** NICE guidelines for Parkinson's Disease
D. Forsyth
- 18.00 - 18.15** **Break**
- 18.15 - 20.00** Best practice guidelines on dysphagia management in neurodegenerative diseases
Perioperative management of patients with Parkinson's Disease
Join Dr Forsyth in his consultations on the surgical and medical wards and discuss Good Clinical Practice
D. Forsyth

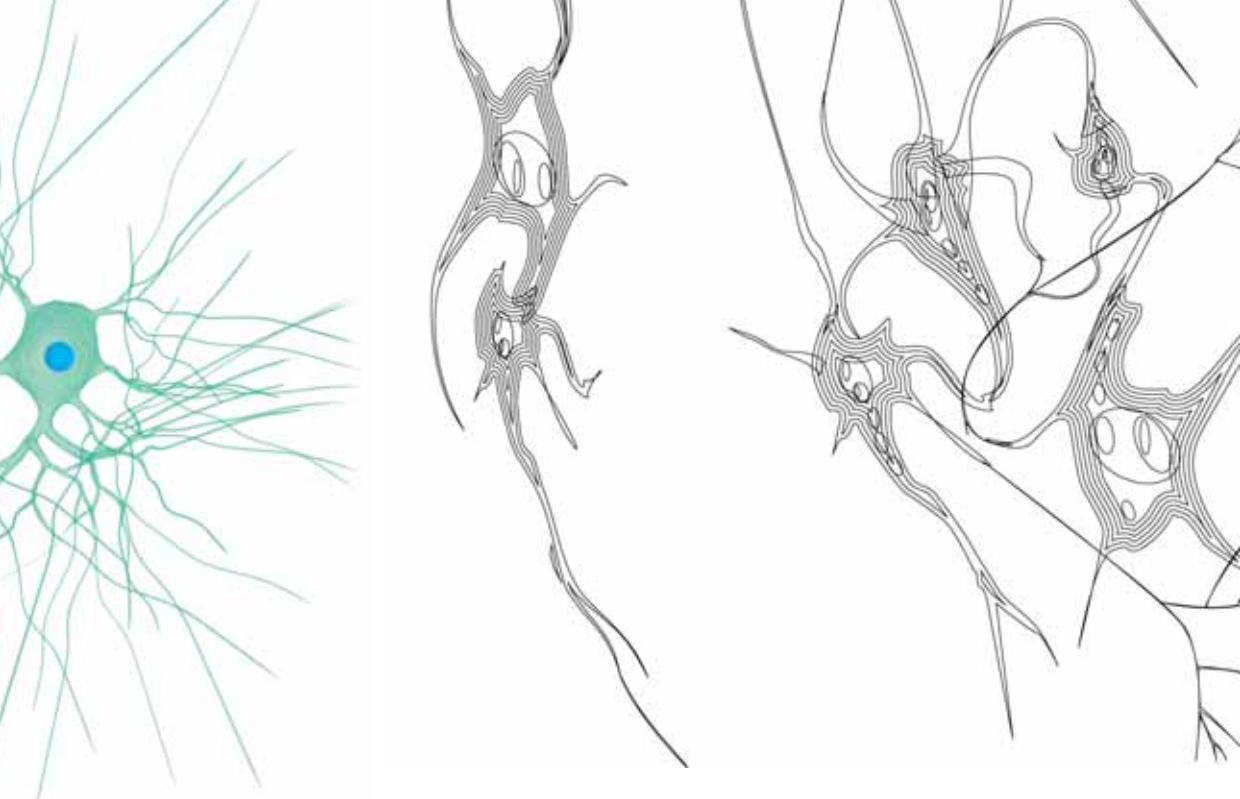
Saturday 22nd September 2012

- 09.00 - 11.00** A roundtrip through an important selection of neurology cases. Differential diagnosis and Management guidelines
D. Forsyth
- 11.00 - 11.15** **Break**
- 11.15 - 14.00** Stroke Epidemiology, Prevention, AF guidelines, Doppler and Carotidendarterectomy, Infrastructure needed for prevention, Stroke Imaging - Best Practice, Clinical case examples
A. Rudd
- 14.00 - 16.00** **Light Lunch**
- 16.00 - 17.00** How to manage symptoms of patients with neurodegenerative diseases, based on the Palliative care guidelines, incl case examples
D. Forsyth
- 17.00 - 17.15** **Break**
- 17.15 - 19.00** Acute treatment of stroke, incl. Thrombolysis - selection of patients, organization of urgent care
TIA's - How urgent are they
TIAs and their mimics - Differential diagnosis, cases
A. Rudd

Sunday 23rd September 2012

- 10.00 - 12.00** The Stroke Unit - Organisation of stroke care, How is the unit set up, indications for admission, purpose of stay in unit, how is discharge determined and organized, early supported discharge, benefits - health and economic
A. Rudd
- 12.00 - 12.15** **Break**
- 12.15 - 13.15** Clinical Trials in Neuro/Stroke
A. Rudd
Discussion





NEXT MEETINGS

- **19-21 October 2012**, Divani Caravel, Athens
Ethics
Evidence based medicine
Guidelines: General introduction
Good Clinical Practice: General introduction and basics
- **02-04 November 2012**, Divani Caravel, Athens
Good Clinical Practice focus on major neurological diseases [headache, multiple sclerosis, myopathies, myasthenia gravis, polyneuropathy, traumatic brain injury, brain tumors, etc]

Διοργάνωση:



Ινστιτούτο Ιατρικής Έρευνας και Εκπαίδευσης
Μαραθωνομάχων 26, 151 24 Μαρούσι, Αττική
Τηλ.: 210 6827405, 210 6839690-1, Fax: 210 6827409
E-mail: dpanakoulia@img.gr, Web site: www.inieek.eu